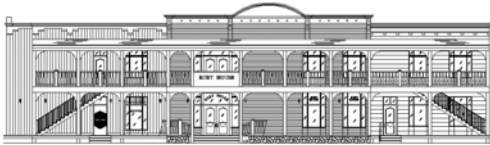


The Ruby House Restaurant



In June 2003, the historic Ruby House Restaurant and Red Garter Saloon in Keystone, South Dakota was destroyed in a tragic fire. The new 3-story facility will recreate the old west atmosphere of the original restaurant/saloon and provide for increased seating and improved traffic flow. The design-build project is programmed to include a main floor dining area, balcony dining, two-level old style saloon, offices, prep kitchen and main kitchen. An exterior deck and balcony was included to provide outside dining and saloon service.

Project Data

Location

Keystone, South Dakota

Building Type

Historic Restaurant

Building Area

13,130 square feet
(1,200 square feet of
Exterior Balcony)

Mechanical Systems / Features

Electric Hot Water (Bar/Restroom)
Propane-fired Hot Water (Kitchen)
Air-to-Air Heat Pumps
Fire Sprinkler

Electrical Systems / Features

Electrical Service / Distribution
Separate Electrical Metering
Historic Lighting Design

Completion Date

Spring 2004 (estimated)

Architect

Lund Associates, Ltd.
www.lundltd.com

Contractor

Gustafson Builders
www.heavyconstructors.com

Mechanical Engineering

The mechanical design involved new heating, air conditioning, domestic hot and cold water systems, and full fire sprinkler system for the entire building.

Since no natural gas service was available, the owner requested the systems be designed to minimize any propane loads. As such, the mechanical design involved new systems utilizing electrical power wherever possible.

The domestic hot water system was designed with electric water heaters being utilized for the restrooms and bar. A propane-fired water heater system was designed to meet the domestic hot water requirements for the kitchen.

An electric heat pump system was designed to provide for the heating needs of the facility.

Electrical Engineering

This facility required a new electrical service since all existing electrical systems were destroyed in the fire. Separate metering and electrical panels for the restaurant and the saloon were coordinated with the utility service and the owner.

Coordination with equipment suppliers was required to determine the electrical needs for equipment in the kitchen, prep kitchen, dishwashing room and bar.

To enhance the old west atmosphere in the restaurant and saloon, lighting design included the use of antique style light fixtures. Old fashioned walkway lighting poles were utilized for the exterior seating area to help create an old style ambiance on the boardwalk.