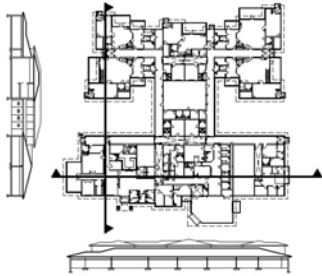


Lower Brule Justice Center



The single-story Lower Brule Justice Center will comprise 37,260 gross square feet of occupancy classification I-3 detention space on the Lower Brule Reservation in central South Dakota. The facility will provide for 36 adults and 10 juvenile inmates and will be built to satisfy BIA and ACC standards.

Project Data

Location

Lower Brule, South Dakota

Building Type

Institutional

Building Area

37,260 square feet

Mechanical Systems / Features

Domestic Hot Water
(140°F – Kitchen/Laundry)
(110°F – General Building)
NFPA 13 Fire Sprinkler
UBC Smoke Control Standards
DDC HVAC/Smoke Control

Electrical Systems / Features

Vandal Resistant Design
Emergency Generator
Fire Alarm
Lightning Protection

Completion Date

Scheduled for Late, 2004

Architect

KKE Architects
www.kke.com

Mechanical Engineering

The HVAC systems for the housing units, classroom areas and administration areas will be determined pending input and decisions from the Owner. The HVAC for service areas, such as mechanical and electrical rooms, receiving, and storage, will be simple unit heaters and exhaust for ventilation as required. Kitchen exhaust fan(s) will be connected to the hood(s) selected by the Kitchen Design Consultant. The make-up air unit will be indirect gas-fired or electric heating and electrical cooling. Controls will consist of a complete direct digital control system with central operator computer interface.

Plumbing will include domestic cold water system, domestic water heating system (140°F Kitchen & Laundry, 110°F Building), water softening system, and plumbing fixture – security type as required.

The entire facility will be served by an automatic fire sprinkler system based on NFPA 13. Smoke control design will be provided in conjunction with UBC and the Authority Having Jurisdiction.

Electrical Engineering

A lighting control system will be used to control operation of fixtures within the Secure Units, Group Holding and Sallyport areas. Group meeting areas, such as the Dayrooms, Corridors, etc. will have keyed switches.

An electrical main service will be sized for the Justice Center and a future Courts and Police addition. A stand-by diesel generator will be installed for this facility.

A complete, total area coverage addressable fire alarm system suitable for this I-3 occupancy (voice evacuation with paging quality speakers) will be provided. Security, Telephone/Data, and Television Systems will also be provided.

A lightning protection system is planned for this facility.